

# PM type Stepping Motors MSGU series

## ■ MSGU series



## ■ Standard specifications

Size (mm)	Φ4.4 × L8.2
Weight (g)	0.6
Resistance (Ω)	10
Rated voltage (V)	5
Step angle (deg.)	22.5
Driving waveform	bi-polar
Excitation	2 phase
Holding torque (mN·m)	0.4
Max self start frequency (pps)	3200
Operating temperature (°C)	-20~60
FPC	○

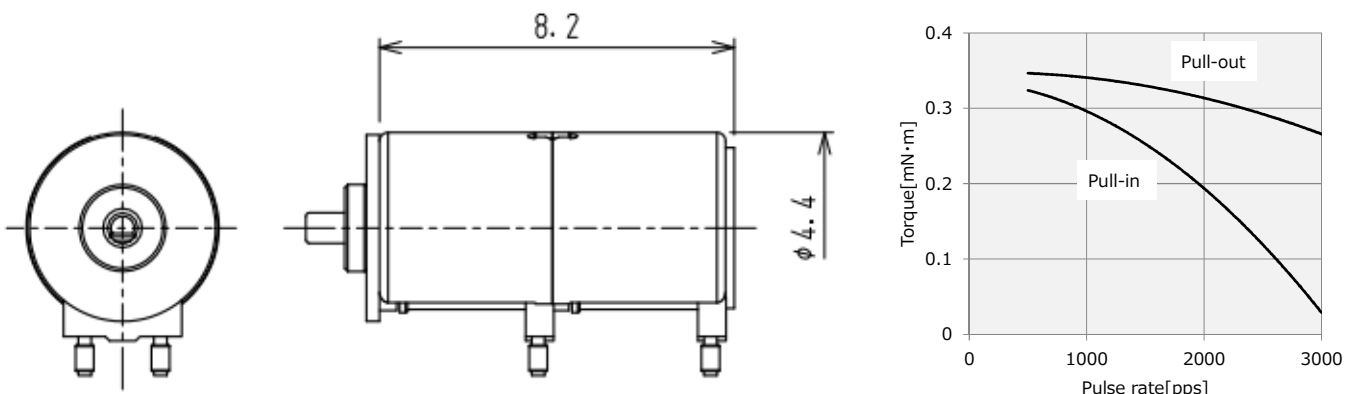
## ■ Applications

Mobile device

## ■ Characteristics

A small diameter, long, high torque motor that can be used in narrow spaces of mobile devices. Suitable for use in thin devices.

## ■ Dimensions / Torque characteristic



Characteristic data is based on standard specifications

# NIDEC SANKYO CORPORATION

For additional information, please contact our sales.

### Tokyo Office

Nidec Tokyo Bldg., 1-20-13 Osaki, Shinagawa-ku, Tokyo 141-0032, Japan Tel:(81)3-5740-3000