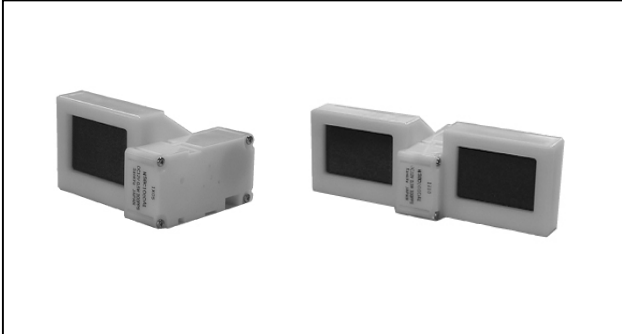


# Motor Drive Units Duct Damper Units NSBC/NSBD

## ■ NSBC/NSBD



## ■ Applications

For refrigerator  
Control for cold air flow by open-close operation.

## ■ Features

- It's mounted in air duct.
- Connector mounted on drive unit.
- Heater can be attached

## ■ Specifications

		NSBC	NSBD
Motor driving parts	Rated voltage / Pulse rate	DC12V / 300pps	
	Current input	60mA or less	
	Excitation	2 phase excitation, bi-polar	
	Step angle	7.5° /step	
Baffle parts	Baffle	Single type	Twin type
	Step angle	About 0.05° / step	
	Operation	Close→Open→Close	Close-Close→ Open-Close→ Open-Open→ Close-Open→ Close-Close
	Operating time(One way)	About 6.2 s	About 21.1 s
	Output shaft torque	More than 0.08N·m	
Operating temperature		-30~35°C	

## NIDEC SANKYO CORPORATION

For additional information, please contact our sales.

### Tokyo Office

Nidec Tokyo Bldg., 1-20-13 Osaki, Shinagawa-ku, Tokyo 141-0032, Japan Tel:(81)3-5740-3000