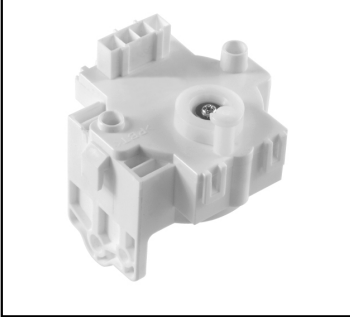


■ NTCT



■ Applications

Drain valve drive motor for fully automatic and drum-type washing machines

■ features

- AC driving supply(AC100V, AC220~240V, 50/60Hz)
- The type of load holding with non-energization.
- One direct rotation by one way clutch

■ Specifications

Motor drive parts	Rated voltage	AC100V(50/60Hz) AC220~240V(50/60Hz)
	Voltage range	AC85-115V(AC100V type) AC187-276V(AC220~240V type 50Hz) AC204-246V(AC220~240V type 60Hz)
	Current consumption	44±5mA(AC100V 50Hz) 41±5mA(AC100V 60Hz) 19±5mA(AC220V 50/60Hz) 22±5mA(AC240V 50/60Hz)
Output operation parts	Operating type	Lever type
	Tractive ability	25N
	Operating time	5.3~7.0(50Hz)、4.5~6.0(60Hz)
	Operating stroke	27.2mm~29.5mm
Operating temperature		-5~40°C

NIDEC SANKYO CORPORATION

For additional information, please contact our sales.

Tokyo Office

Nidec Tokyo Bldg., 1-20-13 Osaki, Shinagawa-ku, Tokyo 141-0032, Japan Tel:(81)3-5740-3000