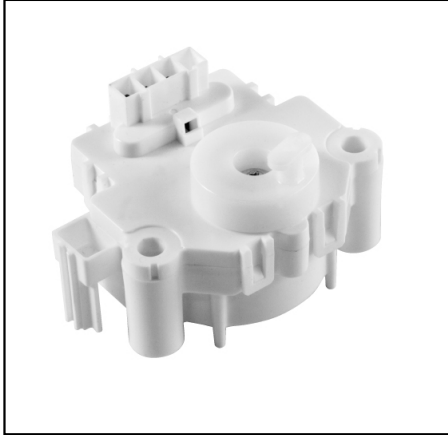


Motor Drive Units Mechanical Units NTCV

■ NTCV



■ Applications

Drain valve drive motor for fully automatic and drum-type washing machines.

■ Features

- AC driving supply
- The type of load holding with non-energization.
- High-Torque type of NTCT

■ Specifications

Motor drive units	Rated voltage	AC100V(50/60Hz) AC220/240V(50Hz)
	Voltage range	AC90~110V(AC100V type) AC198~264V(AC220~240V type)
	Current consumption	39.0±8mA(AC100V/50Hz) 36.0±8mA(AC100V/60Hz) 20.5±5mA(AC220V/50Hz) 22.5±5mA(AC240V/50Hz)
Output operation parts	Operating type	Lever type
	Operating time	5.0r/min.(50Hz), 6.0r/min.(60Hz)
Operating temperature		0~50°C

NIDEC SANKYO CORPORATION

For additional information, please contact our sales.

Tokyo Office

Nidec Tokyo Bldg., 1-20-13 Osaki, Shinagawa-ku, Tokyo 141-0032, Japan Tel:(81)3-5740-3000