

CORPORATE PROFILE



One *Nidec*

Under the corporate brand “Nidec”,
all Nidec Group companies are unified,
and their individual expertise is merged at a high level,
for us to seek to produce products ahead of other companies
and be the world’s leading enterprise,
and contribute to realizing a more affluent and sustainable society.

Corporate slogan

 **All for dreams**

Nidec Corporation has a corporate slogan,
“All for dreams,”
and a corporate statement
that stipulates the values
that we offer to our stakeholders.

Corporate statement

We begin with dreams.
Dreams drive our motivation.
Dreams are our future.

The world’s dreams, people’s dreams, our dreams.
Our passion creates ideas that make dreams come alive.

Technology and products
that were only dreams become reality.

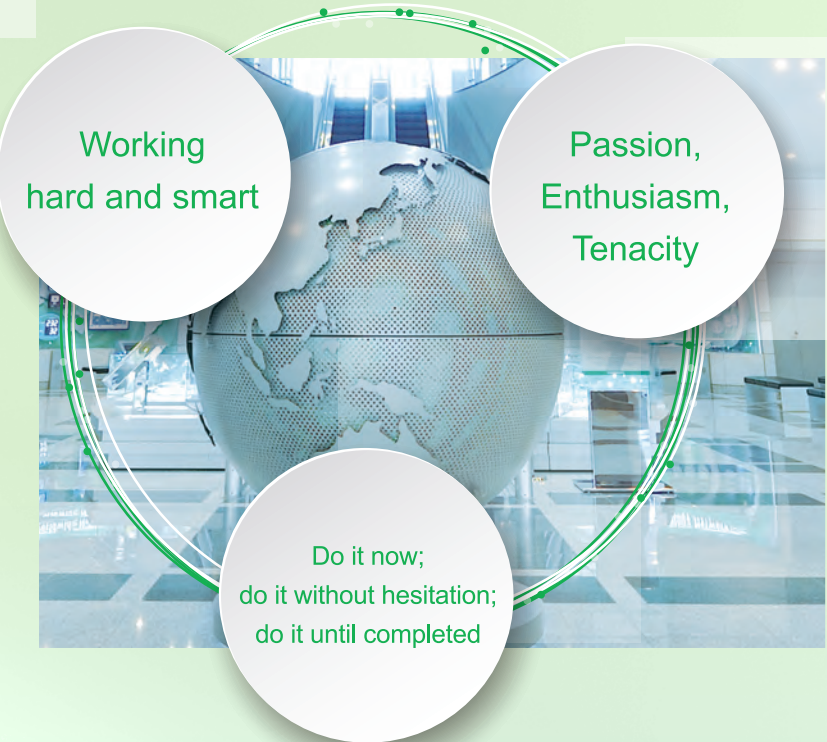
All for dreams

Dreams challenge and the Nidec-Group
will continue to meet the challenge.
For the world’s and people’s tomorrows,

The world’s first,
the world’s best technologies and products,
We will continue our part in creating a better society.

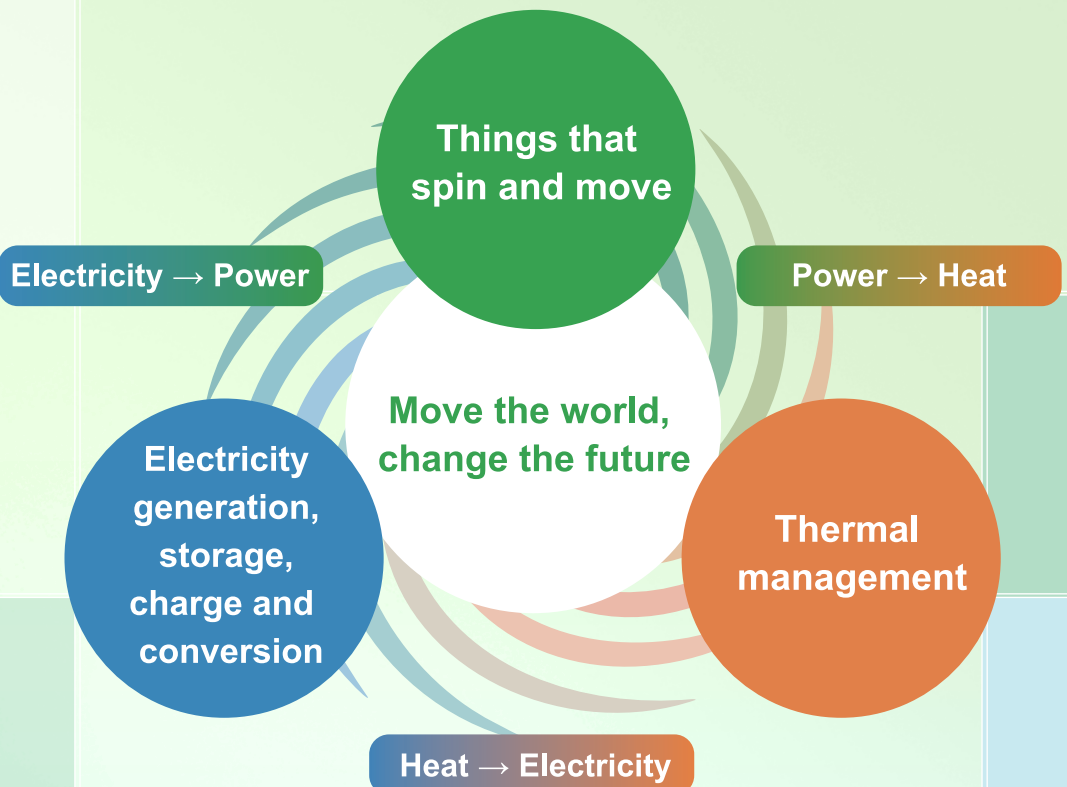
Nidec
 **All for dreams**

Upholding the three all-time essential attitudes as our driving force, Nidec continues to take on challenges on a worldwide scale to become “the world’s leading comprehensive electronics manufacturer.”

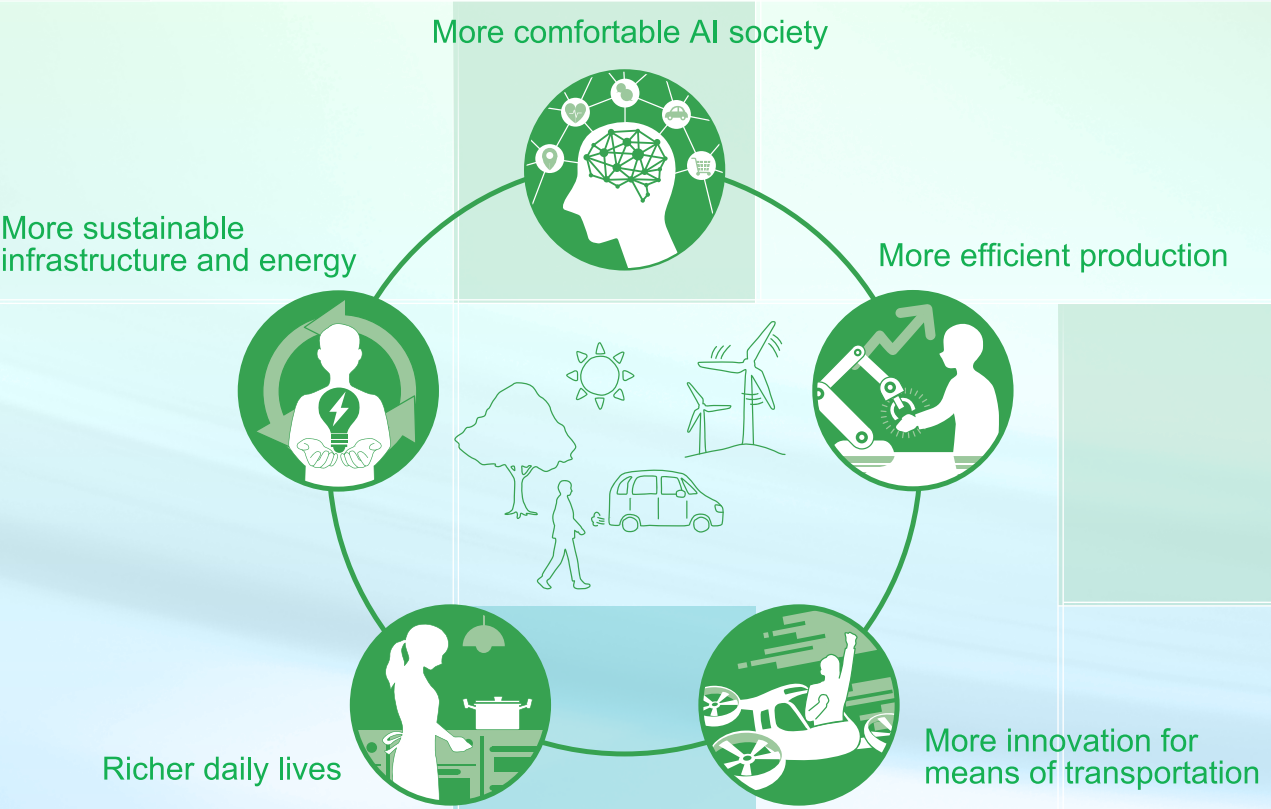


Three core technologies to create five futures

Three axes of technology



Five areas of business



The Nidec Group’s corporate philosophy, mission, and vision



Policy

The aim of Nidec Corporation is to contribute to the development of society and the welfare of the general public around the world. Nidec aims to do so by supplying the highest quality products. Our company is sincerely and enthusiastically dedicated to the trinity of technology, skillfulness, and modern science. Thereby, Nidec strives to promote the prosperity of our society, our company, and all our employees.

Mission

We contribute to the Earth by producing the highest quality motors in the world.

All Nidec employees work to the very best of their ability to send motors into the world. It is with these motors and other products we make that we solve various issues such as the conservation of the global environment, and contribute to making better lives for people all over the world.

Vision

- Nidec is a global company that grows sustainably for the next 100 years and beyond.
- Nidec is the world’s leading solution-providing business group that solves numerous problems for the people in the world.

Value

- “Nidec Way” “The Challenging Road”
- Three Corporate Policies: “Passion, Enthusiasm, and Tenacity,” “Work smart,” and “Do your work now; do it without hesitation; do it until completed.”
- “Creativity,” “Respect,” “Collaboration,” “Integrity,” “Decision Making,” “Team Building,” and “Grow Talent.”

Discipline & Code

- 3Q6S
- Seven Articles of Nidec Employees, 3Ps (Be proactive, productive, and professional), and eliminating six bad habits
- Three Management Principles ■Three Basic Management Philosophies
- Three Management Methods ■Three Management Attitudes ■Three Conditions for Success
- CSR Charter (social responsibility, respect for diversity, etc.)

Proud of our past, focused on the future

- The next 100 years of revolution -

Nidec
All for dreams



For the past 50 years, Nidec has grown with passion. To make Nidec a larger company, I am determined to raise it to the next stage by fulfilling our stakeholders' expectations.

Based on the core technologies for “things that spin and move” that were nurtured since its foundation, the Nidec Group has advanced three technological axes, including “thermal management” and “electricity generation, electricity storage, electricity charging, and electricity transformation.” Now, Nidec utilizes these technologies to advocate five pillars of businesses, i.e.: “cooling and electricity-conversion technologies to support AI society,” “renewable energies-based electricity supply system,” “robot reducers and machine tools to improve industrial efficiency,” “smart appliances and air-conditioning units to enhance the quality of life,” and “next-generation mobility to facilitate electrification and automation.”

Based on the “Made in market” policy, Nidec’s production bases are spread across the world, and offer high quality, short lead time, and comprehensive services that satisfy our customers. In addition to motors, we offer control circuits, software, and other system solutions that are personalized to our customers’ needs.

Additionally, this fiscal year marks the launch of Conversion 2027, our new mid-term business plan, for us to revitalize the entire Nidec Group’s organization and accelerate the training of next-generation leaders, and build a solid infrastructure to support our sustainable growth. Thus, we will seek an organic growth and transform Nidec into a high-profitability entity, by promoting a growth- and efficiency-oriented organizational management.

Based on the global action guidelines of “Diversity & Inclusion: Share and respect different opinions as we move ahead,” and “Open & Transparent: Expose your strengths and weaknesses, and speak honestly with each other, for mutually complementary and true collaborations,” we aim to create a sustainable society via redoubled efforts and innovations, and by constantly taking on challenges as One Nidec.

Your continued support – which will be vital for our success – would be truly appreciated.

Mitsuya Kishida

President and CEO (Chief Executive Officer)

How four people’s dream grew to make Nidec
become the world’s leading comprehensive motor manufacturer

Nidec – Defined by Our Quest to Be No.1

Under the “One Nidec” policy, we stay united as a group,
and constantly forge ahead to achieve our dreams.



1973~

A big dream that started in a small humble shed

On July 23, 1973, Mr. Shigenobu Nagamori, who was then 28 years old, and who now serves as Nidec Corporation’s Founder and Chairman of the Board, founded the company, with three others with a capital of 20 million yen in Nishikyo-ku Kyoto. Full of passion to make Nidec the world’s leading company, the four young men started to manufacture and sell small precision AC motors, Mr. Nagamori soon flew to the United States alone and cultivated promising enterprises as customers by visiting them and knocking on doors without appointments.

- 1973.07 Nidec Corporation is founded in Kyoto, Japan.
- 1973.08 Nidec Corporation starts the production and sales of small precision AC motors.
- 1976.04 Nidec America Corporation is founded in St. Paul, Minnesota, USA.



Small precision AC motors



Mr. Nagamori on business in St. Paul, Minnesota, USA

1980~

Nidec becomes the world’s top HDD spindle motor manufacturer.

In 1981, the personal computer market in the United States began to take off and, taking advantage of this trend, Nidec launched the production of spindle motors for 5.25-inch hard disk drives (HDDs). Subsequently, the company produced small precision AC motors for office equipment and axial flow type brushless DC fans, followed by the full-scale production of 3.5-inch HDD spindle motors in 1984. It was during the same year that Nidec acquired the axial flow fan division of Torin Corporation of the US, and renamed it as Nidec Torin Corporation, making Nidec’s very first M&A-based purchase of a company. In Japan, Nidec established new production bases in Shiga, Okayama, Nagano and Tottori Prefectures, while advancing into overseas markets in Singapore, Thailand, Taiwan, China, Germany, the Philippines, and other countries, transforming itself from a Kyoto-based venture company to a global company at an amazingly fast pace.

- 1984.02 Nidec Torin Corporation (current Nidec America Corporation) is founded in Torrington, Connecticut, USA, as a result of the first company acquisition in Nidec’s history.
- 1988.11 Nidec Corporation lists its stock on the Kyoto Stock Exchange and the Second Section of the Osaka Securities Exchange.
- 1994.10 Nidec Corporation launches the production of FDB-equipped HDD spindle motors.
- 1998.09 Nidec Corporation lists its stock on the First Section of the Tokyo Stock Exchange.



Mr. Nagamori attends an investiture ceremony to commemorate Nidec’s listing on the Osaka Securities Exchange.



Mr. Nagamori signs an agreement to purchase Torin Corporation.



Mr. Nagamori rings the opening bell at the New York Stock Exchange to commemorate the company’s listing of its stock there.

2000~

Nidec goes global through business diversification and acquisitions.

In 2001, Nidec went public on the New York Stock Exchange. The construction of the company’s Head Office and Central Technical Laboratory building was completed in Minami-ku in the city of Kyoto in 2003. Nidec continued to conduct business in the global market while actively purchasing companies through M&A both inside and outside Japan, to become the world’s leading company in the field of small precision motors.

- 2001.09 Nidec becomes listed on the New York Stock Exchange (until May 2016).
- 2003.05 Nidec Corporation relocates its head office to the southern part of Kyoto, and opens its Central Technical Laboratory.
- 2015.03 Nidec’s net sales exceed 1 trillion yen.
- 2017.01 Nidec Corporation acquires the motor/drive and generator businesses of Emerson Electric Co. (current Nidec Leroy-Somer Group and Nidec Control Techniques Group).



Nidec Corporation acquires capital in Japan Servo Co., Ltd.

2023~

Transforming ourselves from a Japanese company to the world’s leading comprehensive electrical manufacturer

We at the Nidec Group utilize world-leading technological, product development, and production capabilities to create products based on group-wide synergies and accomplish a growth strategy successfully, to become the world’s leading comprehensive electrical manufacturer.

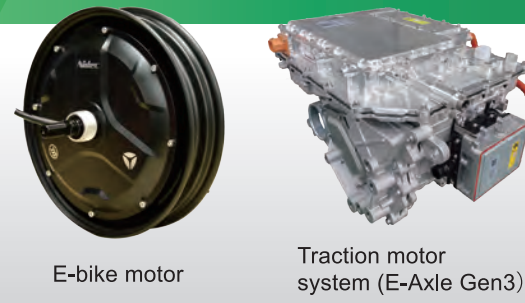


The joint venture between Nidec and Brazilian major aircraft carrier Embraer S.A starts operations

- 2019.07 Nidec Corporation purchases Embraco (current Nidec Global Appliance), the compressor business of Whirlpool, a US company.
- 2019.10 Nidec Corporation purchases OMRON Automotive Electronics Co. Ltd. (current Nidec Mobility Corporation).
- 2021.08 Nidec Corporation purchases Mitsubishi Heavy Industries Machine Tool Co. Ltd. (current Nidec Machine Tool Corporation).
- 2022.02 Nidec Corporation completes the purchase of the shares of OKK Corporation through a third-party allocation of common shares based on the capital alliance agreement with the company. (current Nidec OKK Corporation).
- 2023.04 The company name was changed from Nihon Densan to Nidec.
- 2023.11 Nidec Corporation purchases Takisawa Machine Tool Co., Ltd.
- 2024.04 Nidec Mobility Corporation and Nidec Elesys Corporation merge.

One Nidec

Decarbonization



E-bike motor

Traction motor system (E-Axle Gen3)

Manpower saving



Machine tool



Robot reducers

Move the World. Change the Future.

Nidec solves issues for people and the world,
And creates a prosperous future.

Global warming/power saving



DC brushless motors

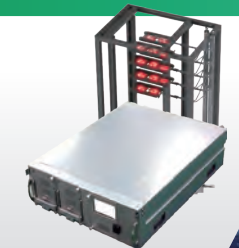


Battery energy storage system (BESS)

DX (digital transformation)



Electricity-producing alternator



Water-cooling modules

Automotive Products

- ▶ For Chassis
(Electric Power Steering Motors & ECUs, Electric brake motor, ABS/ESC Motors, etc.)
- ▶ For Powertrains
(EV traction motor system, Control Valves, DC/DC converters for EVs etc.)
- ▶ For Bodies
(Head-up Display (HUD) Drive Motors, Cooling Fans, Seat motor, Sunroof motor, Body ECU, Smart entry system, Power window switch, etc.)



Traction motor system (E-Axle Gen3)



Electric power steering motor control unit (column type)



Body ECU



Robotics

- ▶ Motors for Service Robots
- ▶ Drone Motors
- ▶ Reducers
- ▶ Camera Modules
- ▶ Torque sensor and six-axis force sensor
- ▶ AC Servo Motors
- ▶ DC Servo Modules
- ▶ Industrial Robot Modules
- ▶ Joint Modules for Industrial Robots
- ▶ Linear Actuators



Robot reducers



AC Servo Motors (S-FLAGII)



DC Servo Modules



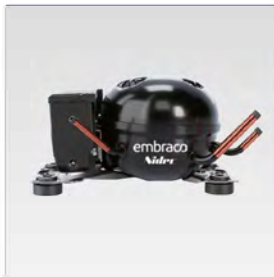
For more information about our products, please visit the online edition of the "Nidec Group Products Catalog" at <https://www.nidec.com/en/product/catalog/>

Home Appliances

- ▶ Air Conditioner Motors and Actuator Units
- ▶ Refrigerator Fan Motors, Motor Drive Units, and Ice Makers
- ▶ Clothes Washer and Dryer Motors and Actuator Units
- ▶ Dishwasher Motors and Pumps
- ▶ Vacuum Cleaner Motors
- ▶ Compressors for Household Refrigerators



Air Conditioner Fan Motors



Compressors for Household Refrigerators

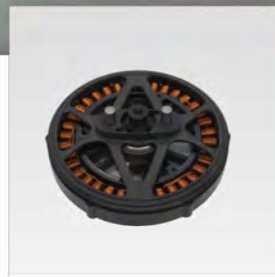


Logistics/Agriculture

- ▶ Drive Units for Automated Guided Vehicles (AGVs)
- ▶ Motors for Drones
- ▶ Drive Motors for Electric Forklifts
- ▶ Loading/Unloading Motors for Forklifts
- ▶ Servo Motors
- ▶ Inverter Drives
- ▶ Motors for Conveyors



AGV modules



Motors for Drones

IoT/DX Products and Solutions

- ▶ Network Devices
- ▶ Industrial Robot Modules
- ▶ Vision Sensors
- ▶ Modular Automation Lines
- ▶ IPS - High-accuracy indoor positioning system
- ▶ Water-cooling modules



TransmitTag for IPS (Genuine Tag: QT1 -1 model) Antenna for IPS (for Short range: QI 7 model)

Electronic Parts/Sensors

- ▶ Pressure Sensors
- ▶ Fluid Leak Sensors
- ▶ Magnetic Quantity Sensors
- ▶ Potentiometers
- ▶ Rotary Encoders
- ▶ Joystick encoder
- ▶ Switches
- ▶ Trimmer Potentiometers
- ▶ Attenuators
- ▶ Circuit Protection Components
- ▶ Image Scanner Units



Pressure Sensors



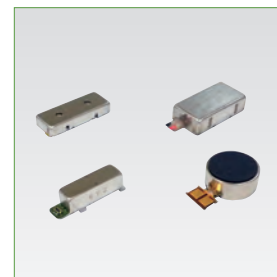
Switches

Tactile Devices

- ▶ Smartphone and Tablet Components
- ▶ Wearable Components
- ▶ VR and Game Controller Devices
- ▶ Home Appliance Control Panel and Other Components
- ▶ Automotive Touch Panel Components
- ▶ Robot Components



Linear Vibration Motors



Actuators for Mobile Devices

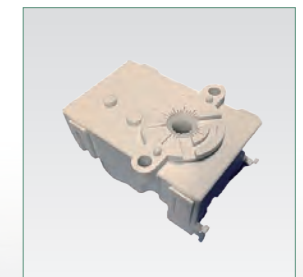


Actuators for Large Vibration



Home/Residential

- ▶ For Kitchens
- ▶ For Hot Water Heaters, Gas Heaters, and Fuel Cells for Residential Use
- ▶ For Bathroom Dryers and Bathroom Heaters
- ▶ For Sanitary Products and Water Supply Utilities
- ▶ For Living Rooms
- ▶ For Barrier-Free and Universal Designs
- ▶ For Security Cameras



Water heater valve drive motor



Sanitary soft-closing unit

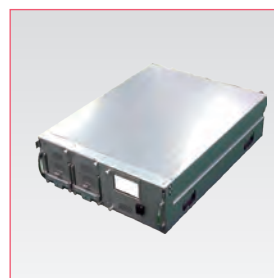


IT/Office Equipment/Mobile Devices/ Optical Components

- ▶ HDD Motors and Baseplates
- ▶ Fan Motors
- ▶ Small Brushless DC Motors
- ▶ Hybrid Stepping Motors
- ▶ Lens Units
- ▶ Mechanical Shutters
- ▶ Precision Machined Components
- ▶ Coreless Motors
- ▶ Small Brush Motors
- ▶ Color Wheel Motors for DLP™ Projectors
- ▶ Stepping Motors
- ▶ High-Precision Gears
- ▶ Polygon scanner motor
- ▶ Water-cooling modules



HDD Motors/Base Plates



Water-cooling modules



Medical/Health Care

- ▶ For Power Assist Suits, Electric Wheel Chairs, and Personal Mobility
- ▶ Massage Chair Motors
- ▶ For Beds
- ▶ For Dialysis Devices
- ▶ Disposable Components for Medical Care Products
- ▶ For CT Scanners
- ▶ For Pharmaceutical Dispensers
- ▶ Customized Operation Panels (Sealed IP67)
- ▶ Transfusion Equipment Motors
- ▶ Pressure sensor and liquid-leakage sensor



Blood pump



Commercial

- For Golf and Utility Carts
- For Material Handling Vehicles
- For Electric Vehicles
- Elevator Equipment
- For Commercial Air Conditioners
- Pump Motors
- Motors and Pumps for
- Commercial Kitchen Equipment
- Compressors for Commercial Refrigerators
- Floor Care Equipment
- Potentiometer and encoder
- ATM and CD, Payment Kiosks, and Ticketing Machines and Retail Terminals (Card Dispensers and Readers)
- Laser Markers
- For Amusement
- Commercial refrigerator compressor, ECM fan, and controller



Elevator Motors and Controllers



Traction Motor Drive Mechanisms



Commercial refrigerator compressor, ECM fan, and controller



Machine Tools/Mechanical Equipment/ Inspection Equipment

- Printed Circuit Boards and Continuity Inspection Systems
- PCB Separation Machines
- Optical Vision Inspection Systems and Semiconductor-related Products
- Fixtures and Software for Inspection
- Soldering Equipment
- Electrical Current Testing Systems for Semiconductor Package Substrates
- Dispensers and Coating Equipment
- Specialized Application and Automotive Device Inspection Equipment
- Vision Sensors
- Displays and Input Device Inspection Equipment
- Press Machines and Feeders
- Die Designs and Production
- Winding Machines
- Laser Markers
- Measurement and Assembly Equipment
- Measuring Instruments
- Pressure sensor



Machine Tools



Semiconductor Package Continuity Testing Equipment



Precision high-speed automatic press to machine motor cores



Industrial

- Industrial Motors and Drives
- Generators and Drives
- Natural Energy Solutions and Power Conversion Systems
- Reducers
- Battery energy storage systems (BESS)
- Pressure sensor and liquid-leakage sensor



Industrial Motors



Battery energy storage systems (BESS)

Other Products

- Music Boxes
- Ceramic Art Products



80-valve x 2 disc music box Orpheus KAIROS



20-valve disc music box Orpheus KARDIA



Electric Potter's Wheels



Music box assembly class (Suwanone)



Nidec Shin-Kawasaki Technology Center



Nidec Corporation Keihanna Technology Center



Nidec Vietnam Corporation's technology center



Nidec Motor(Dalian) Ltd.'s Technical Center



Nidec Suzhou Co., Ltd.'s R&D center

Research & Development

World-class Research and Development Capabilities



Nidec Corporation Central Technical Laboratory



Roundness Measuring Instruments



Radio wave dark room



ICP-MS



3D measuring scanner



Field Emission Scanning Electron Microscopes



Supercomputers for Simulation



X-ray CT Scanners



Durability tester (bench tester)

Research and Development for the Future

In research and development (R&D), we advocate a phrase, "Constantly create companies' growth engines" as our basic philosophy. To grow permanently for 100 years and beyond, a company must anticipate future markets, and constantly supply the world with products that use world-leading technologies. This is why, for the "R (research)" of R&D, we promote future-unlocking basic researches and new applied researches at Nidec Shin-Kawasaki Technology Center and a research institute in Taiwan. Furthermore, Nidec Keihanna Technology Center researches and develops production technologies to support revolutionary manufacturing. In the "D (development)," Nidec Corporation's and Nidec Group companies' development sites in Japan and overseas development bases around the world work with research institutes to promote product development that closely reflects our customers' needs.

As the world faces climate change, energy problems, and other urgent matters, demands are strong for Nidec to offer technological innovation to help address such issues. In the meantime, artificial intelligence (AI), robotics, and other advanced technologies are achieving a remarkable development, bringing about significant changes in industrial structure and people's lifestyles. To respond to such needs of the times, we at Nidec combine our core technologies with cutting-edge technologies to accelerate the development of products to help realize a sustainable society. That is, Nidec is focused on developing electrification products that contribute to reducing greenhouse gas emissions, high-efficiency products that facilitate energy saving, products integral to the dissemination of renewable energy systems, and key components to support an automated and high-intelligence society, among others.

The concept of building new business base of the Nidec Group

To further enhance ties among Nidec Group companies, we created a conceptual plan to consolidate, among others, Nidec Corporation's second head office, and group companies' head offices and technology centers. As Nidec Corporation expands, part of its functions will be transferred to its new adjacent facilities, while the head offices of Nidec Drive Technology Corporation and Nidec Advance Technology will be transferred as well, as part of our plan's next phase. The entire site will eventually be home to 5,000 employees.



Employees work space

Nidec Corporation Keihanna Technology Center

Nidec Corporation Keihanna Technology Center is a core hub to accelerate the Nidec Group's sustainable growth, and build a future production system. To maximize Nidec products' quality, efficiency, and productivity, the facility researches and develops revolutionary production processes, automation technologies, and AI-based manufacturing systems, to build infrastructure for future smart factories. Further, the technology center develops high-performance and sophisticated materials, collaborates with universities and research institutes to promote R&D of simulation technology; and sensor, actuator, and modularization/systemization technologies, etc., and develops element technologies for new products and innovative functions, to contribute to the Nidec Group's businesses.

Nidec Shin-Kawasaki Technology Center

As members of world-leading R&D facilities of motor of the world-leading comprehensive electrical manufacturer, Nidec's research engineers based in Japan and Taiwan work to deepen our ties with industry and universities and governments around the world, engaging in basic, advanced, and applied researches to create a sustainable society. Under the One Nidec policy, we utilize technology to connect our business bases globally, and train engineers to forge Nidec's future.



Nidec Shin-Kawasaki Technology Center

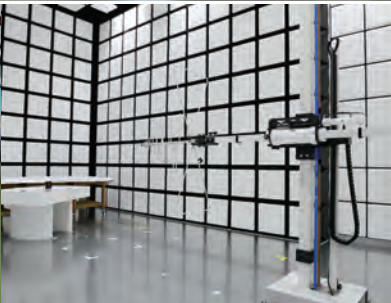


Nidec Research and Development Center, Taiwan



Production and Quality Management

High Quality, Low Cost, Fast Delivery



In-House Development of Production Lines and the Promotion of Key Components' In-House Production

A prompt and constant supply of high quality products is an issue of first priority—and is only attainable by staying closely attuned to product development cycles. In this context, all of our production lines are developed in-house in order to ensure a high degree of adaptability to swift changes in specifications. In order to pursue high value-added products, domestic bases engage in R&D-oriented activities. “Technical centers” of each product field have introduced production lines capable of responding to mass-production for designing and developing new products and now produce and evaluate prototypes.

To properly meet customers' and society's expectations amid constant product development and market growth, it is essential to constantly maintain and improve quality, which is a basic element in manufacturing. This necessity led us to establish a Global Quality Management Division in January 2023, to cross-sectionally manage and supervise quality in the entire Nidec Group. In addition, Nidec, for the first time, appointed a Chief Quality Officer (CQO) in April 2025, to establish a system that oversees the entire Nidec Group's quality assurance departments. Thus, we enhance our governance in the area of quality, and seek synergies via information sharing, to further improve quality in the Nidec Group.



Since obtaining an ISO9000-series certificate for its business bases in Japan in 1994, the Nidec Group has so far obtained the same certificate for more than 130 business bases in and outside Japan, while approximately 90 of our automotive motor production bases and technology development centers have obtained the IATF16949 certificate. In addition, more than 130 business bases in and outside Japan have obtained the ISO14001 certificate, while 40 of our overseas business bases own the Occupational Health and Safety Management System (ISO45001) certificate. Nidec's Small Precision Motor & Solutions Business Group obtained ISO/IEC17025, an international certificate, in 2009 as a chemical laboratory, and accepts analysis requests, while our Central Technical Laboratory obtained AS9100, a certificate for quality management systems for the aerospace industry, in 2023.



SUSTAINABILITY AT NIDEC

Nidec's sustainability

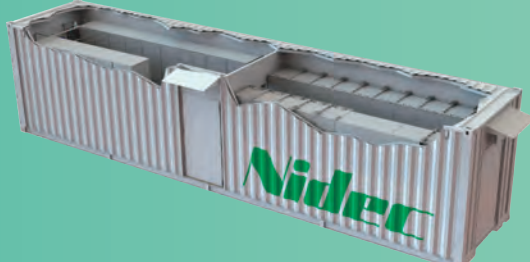
"Employees," "the company" and "products" are the society's "mirrors" to reflect one another. Nidec always polishes these "mirrors" with much care to promote our own growth as a company by making products the way the global society wants us to. This is how Nidec wishes to fulfill our corporate social responsibility (sustainability). Nidec's sustainability (corporate social responsibility) comprises business activities that aim to conscientiously create products and technologies that contribute to society as well as far-sighted activities that benefit local communities. Our CSR contributes to the world by making products that spin and move and that support a bright and prosperous future.

Environmental Contribution through Our Products

By delivering energy-efficient brushless DC motors globally, Nidec contributes to reducing electricity usage. We also develop and provide BESS (Battery Energy Storage System) units, which supply electricity stably and serve as a solution to make renewable energies more reliable. Nidec's BESS units has been delivered to global energy companies, with the total operation capacity exceeding 9GWh in 2024.



The Lily Energy Storage Project in Texas, the US



Inside of a BESS container installed in Northern Europe

Staying Competitive as Socially Desirable Business Even 100 Years from Now

A Sustainable Society



Business Activities

Activities as a Member of Local Communities

Basic Management Creed

The Nidec Group engages in a wide variety of activities in regional communities where we conduct business by eyeing their future.



■Community building support (India)
Work with an NPO to repair a public school



■Cleanup (China)
Clean up their factory's vicinity as members of the local community



■Medical support (USA)
Make donations via an NGO for cancer patients



■Community support (Mexico)
Donate meal boxes and confectionary to commemorate Children's Day



■Training the next generations (Japan)
Support junior high school students' career learning through work experience.



■Community support (Hungary)
Donate uniforms to a local sports team



■Environmental conservation (Indonesia)
Plant mangrove trees



■Relief for disaster-affected people (Brazil)
Donate supplies to regions that suffered from floods

Nidec's Sustainability-related information is available on the company's official website.

Nidec's Sustainability website

<https://www.nidec.com/en/sustainability/>

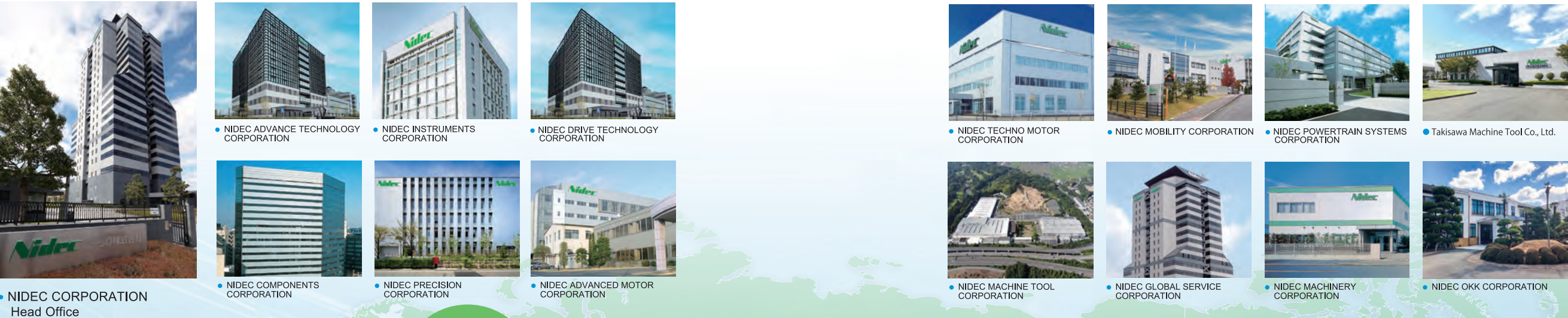
Nidec's Sustainability

Search

Nidec Group Network

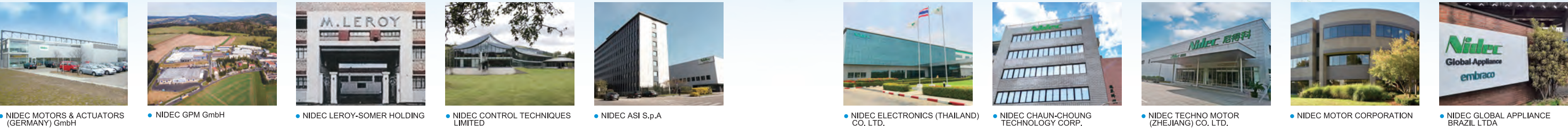
Nidec Group's Global Network with More Than 300 Companies in More Than 40 Countries

Japan



Number of business bases as of March 31, 2025

Overseas



Only the names of our main business bases are listed. For more details, please see the Global Map on our company website at <https://www.nidec.com/en/worldwide/>



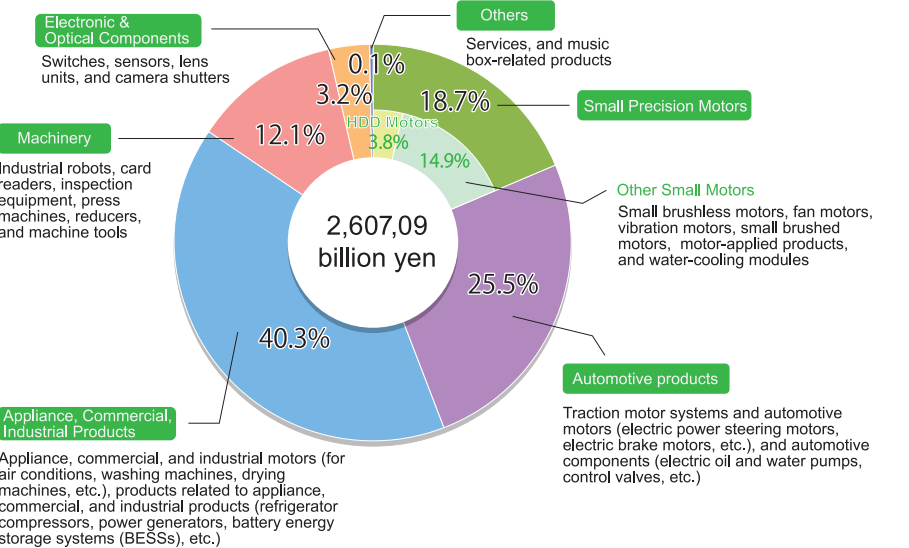
Corporate Directory

Company name	NIDEC CORPORATION (Brand Name: Nidec)
Founder	Mitsuya Kishida / President and CEO
Established	July 23, 1973
Capital	87,784,480,724 yen (as of March 31, 2025)
Stock listings	Prime Market on the Tokyo Stock Exchange
Lines of business	Development, manufacturing, and sales of small precision motors Development, manufacturing, and sales of automotive motors, and home appliance, commercial, and industrial motors Development, manufacturing, and sales of machinery Development, manufacturing, and sales of electronic & optical components Others
HEAD OFFICE	338 Kuzetonoshiro-cho, Minami-ku, Kyoto 601-8205, Japan TEL: +81-75-922-1111 FAX: +81-75-935-6101 URL: https://www.nidec.com/en/

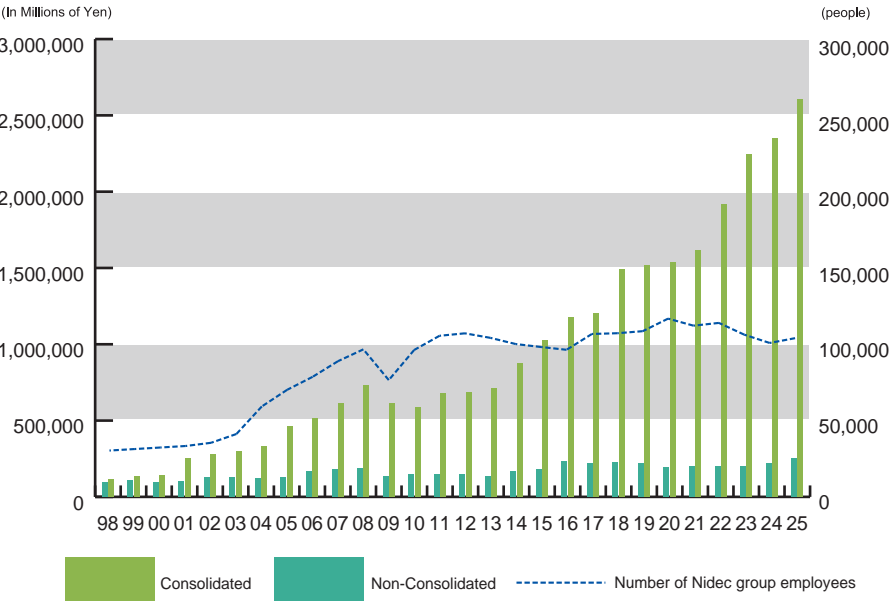


HEAD OFFICE

Sales by Product Group (Fiscal year ended March 31, 2025)



Changes in the Nidec Group's Net Sales and Number of Employees



Challenging for Global No.1



More than 100,000 Nidec Group employees in 40-plus countries around the world work hard each and every day to make Nidec the world's leading comprehensive motor manufacturer.

